



Cambridge O Level

CANDIDATE
NAME

--

CENTRE
NUMBER

--	--	--	--	--

CANDIDATE
NUMBER

--	--	--	--



FASHION & TEXTILES

6130/01

Paper 1 Theory

May/June 2021

2 hours

You must answer on the question paper.

You will need: Ruler
Small piece of fabric, needle and thread

INSTRUCTIONS

- Answer **four** questions in total:
Section A: answer **all** parts of Question 1.
Section B: answer **three** questions.
- Use a black or dark blue pen.
- Write your name, centre number and candidate number in the boxes at the top of the page.
- Write your answer to each question in the space provided.
- Do **not** use an erasable pen or correction fluid.
- Do **not** write on any bar codes.
- You may use an HB pencil for any diagrams or rough working.
- You should illustrate your answers with clear, bold diagrams wherever necessary.
- You may use a needle and thread and a small piece of fabric to help in making drawings of stitches.
- This fabric should **not** be handed in with your work.

INFORMATION

- The total mark for this paper is 100.
- The number of marks for each question or part question is shown in brackets [].

This document has **24** pages. Any blank pages are indicated.

Section A

Answer **all** parts of Question 1.

1 Fig. 1.1 shows a drawing of the front and back view of a ladies' jacket.

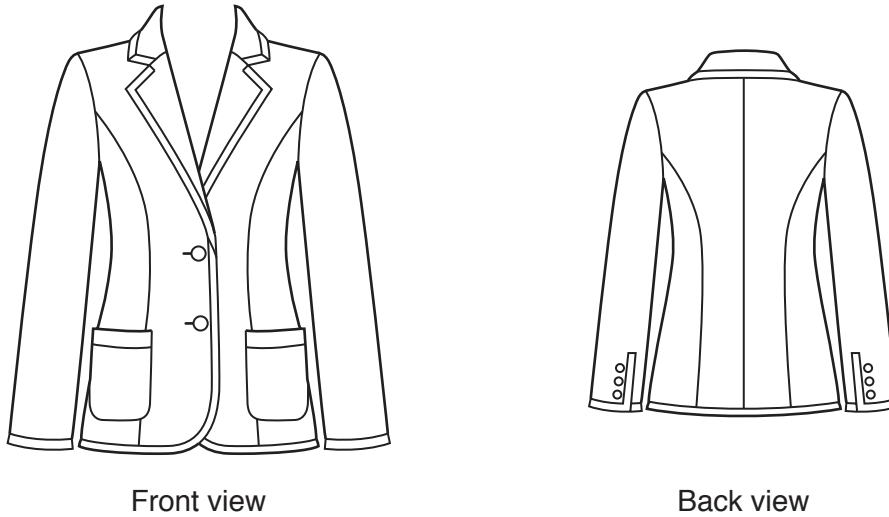


Fig. 1.1

(a) (i) Corduroy fabric is suitable for the ladies' jacket in Fig. 1.1.

Describe corduroy fabric:

Construction

.....

Appearance

.....

Feel/handle

.....

[3]

(ii) State **two** reasons why corduroy fabric is suitable for the ladies' jacket in Fig. 1.1.

1

.....

2

.....

[2]

(iii) State **one** type of interfacing which could be used in the construction of the collar on the ladies' jacket in Fig. 1.1.

..... [1]

(iv) State **two** reasons why interfacing is used in parts of the ladies' jacket in Fig. 1.1.

1

.....

2

.....

[2]

(v) Fig. 1.2 is a drawing of a pattern piece for the back of a collar. Draw the following pattern symbols on Fig. 1.2.

- cutting line
- fold line
- seam line
- single notch.

[4]

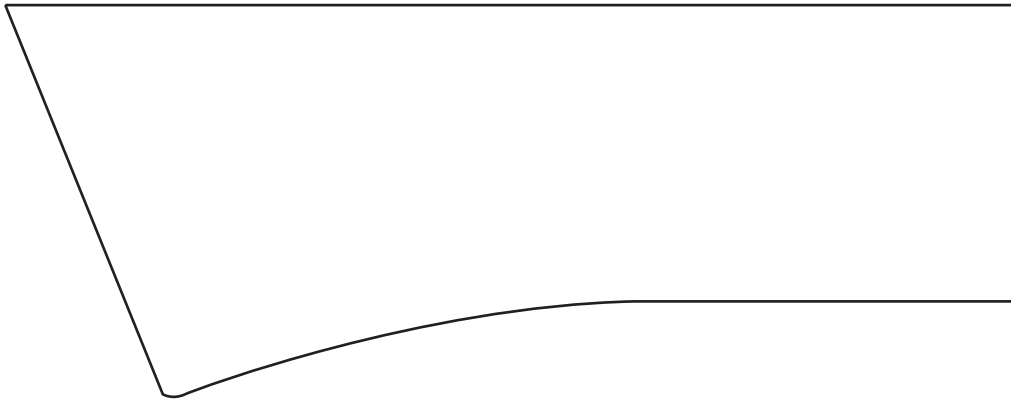


Fig. 1.2

- (b) (i) Explain how to lengthen the **paper pattern** for the sleeve of the ladies' jacket in Fig. 1.1. You may use diagrams to support your answer.

.....

.....

.....

.....

[4]

- (ii) Explain what is meant by 'with nap' when using corduroy fabric.

.....

.....

.....

..... [2]

- (iii) Explain why it is necessary to follow the **straight grain** lines on pattern pieces when preparing the layout of corduroy fabric.

.....

.....

.....

..... [2]

(c) (i) State the **two** types of seam visible on the back view of the ladies' jacket in Fig. 1.1.

1

2 [2]

(ii) Explain how to make sure the curved seam on the back of the ladies' jacket in Fig. 1.1 is pressed correctly.

.....

.....

.....

..... [2]

(d) Identify **two** components that can be used to achieve the finish shown on the front and hem edges of the ladies' jacket shown in Fig. 1.1.

1

.....

2

..... [2]

(e) Explain how to work a machined buttonhole for a 3 cm button. You may use notes and labelled diagrams in your answer.

.....

.....

.....

.....

.....

.....

.....

.....

.....

.....

.....

[5]

(f) (i) Batch production would be used to make the ladies' jacket in Fig. 1.1. Explain the term 'batch production'.

.....
.....
.....
..... [2]

(ii) Identify and briefly describe **two** types of retail outlet that could sell ladies' jackets.

1

.....
.....
.....

2

.....
.....
.....
..... [4]

(iii) Explain **three** advantages to the manufacturer of selling ladies' jackets in **one** of the retail outlet types in (f)(ii).

.....
.....
.....
.....
.....
..... [3]

[Total: 40]

Section B

Answer any **three** questions from this section.

2 (a) (i) State the origin of acrylic fibres.

.....
.....
.....
..... [1]

(ii) Identify **three** methods of spinning acrylic fibres.

.....
.....
..... [3]

(b) (i) Explain how to apply a **brushed** finish to a fabric made from acrylic yarn.

.....
.....
.....
..... [2]

(ii) State **two** reasons to apply a brushed finish to acrylic fibres or fabrics.

.....
.....
.....
..... [2]

3 (a) (i) Sketch and label an **original design** for a summer top suitable for a teenager. Include the following style features: short set-in sleeve, shaped neckline, button fastening, shaped hemline.

[5]

(ii) Identify **one** fabric suitable for the summer top sketched in (a)(i).

..... [1]

(iii) State **two** reasons why the fabric identified in (a)(ii) is suitable for the summer top sketched in (a)(i).

1

.....

2

.....

[2]

4 (a) Define the following textile terms:

(i) Dyeing

.....
.....
.....
..... [2]

(ii) Printing

.....
.....
.....
..... [2]

(b) (i) Explain how to **dye** fabric. You may use labelled diagrams to support your answer.

.....

.....

.....

.....

.....

.....

.....

.....

.....

.....

.....

.....

.....

.....

.....

.....

[4]

5 (a) Describe **one** method used to transfer pattern markings to fabric.

.....
.....
.....
.....
.....
..... [3]

(b) Identify **two** temporary methods of joining fabrics together.

.....
..... [2]

(c) Define the following textile terms:

anti-static [1]
bonded web [1]
eco-labelling [1]

BLANK PAGE

Permission to reproduce items where third-party owned material protected by copyright is included has been sought and cleared where possible. Every reasonable effort has been made by the publisher (UCLES) to trace copyright holders, but if any items requiring clearance have unwittingly been included, the publisher will be pleased to make amends at the earliest possible opportunity.

To avoid the issue of disclosure of answer-related information to candidates, all copyright acknowledgements are reproduced online in the Cambridge Assessment International Education Copyright Acknowledgements Booklet. This is produced for each series of examinations and is freely available to download at www.cambridgeinternational.org after the live examination series.

Cambridge Assessment International Education is part of the Cambridge Assessment Group. Cambridge Assessment is the brand name of the University of Cambridge Local Examinations Syndicate (UCLES), which itself is a department of the University of Cambridge.